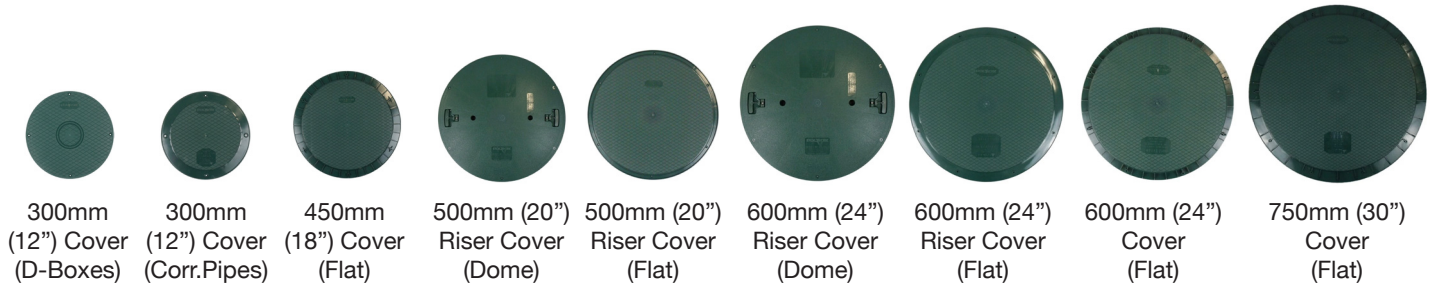


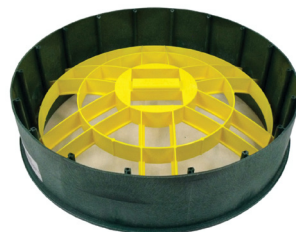
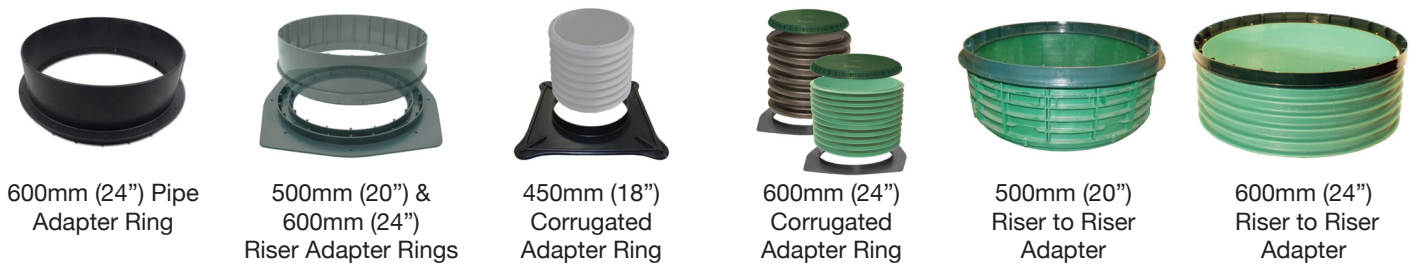
### RISER AND PIPE COVERS



### TANK RISERS AND RISER PANS



### ADAPTER RINGS AND RISER TO RISER ADAPTERS





**Polylok riser kits contain everything\* you need to add these light and robust risers to each tank.**

Polylok risers are modular and available in a variety of widths, heights and covers so you can have the perfect solution for your tank and site needs.

*Choose from a full selection of riser kits at [polylok.eu](http://polylok.eu)*



\*Cover, safety screen, riser, gasket, adapter, butyl and screws (not anchor bolts).

### DISTRIBUTION BOXES & WATER LEVEL EQUALISERS



4-Hole  
Distribution Box



7 hole D-Box  
(Preassembled)



7 hole D-Box  
(Unassembled)



Adjustable  
Equaliser



110mm Rotoflow  
Equaliser

### TREATMENT PLANT/SEPTIC TANK FILTERS & UV DISINFECTION



PL-68 FILTER  
< 3000 ltrs per day



PL-122 FILTER  
< 5700 ltrs per day



PL-250 FILTER  
< 11,500 ltrs per day



PL-525 FILTER  
< 38,000 ltrs per day



PL-625 FILTER  
< 30,000 ltrs per day



ZABEL A1800  
< 1500 ltrs per day



ZABEL A100/300/600  
8" SERIES  
< 11,400 ltrs per day



ZABEL A100/300/600  
12" SERIES  
< 23,900 ltrs per day



IN-LINE PRESSURE  
FILTER  
< 300 ltrs/min

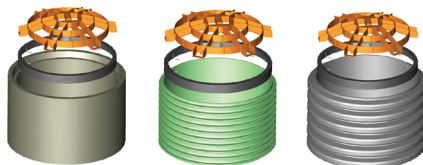


UV DISINFECTION  
< 15,000 ltrs/min

### SAFETY PRODUCTS & ODOUR CONTROL



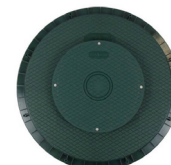
300mm (12"), 500mm  
(20") & 600mm (24")  
Riser Safety Screen



500mm (20") & 600mm (24")  
Universal Safety Screen  
(Note: Actual colour is white)



600mm (24")  
Dual Safety Cover



450, 500, 600, 750mm  
Activated Carbon  
Covers



110mm & 150mm  
Activated Carbon  
Vent Pipe Filter

### ELECTRICAL ACCESSORIES



Duty Pump Panel  
with Alarm



Single Pump  
Control Panels



Dual Pump  
Control Panels



Float Switches