

TREATMENT PLANT/SEPTIC TANK FILTERS & UV DISINFECTION



PL-68 FILTER
< 3000 ltrs per day



PL-122 FILTER
< 5700 ltrs per day



PL-250 FILTER
< 11,500 ltrs per day



PL-525 FILTER
< 38,000 ltrs per day



PL-625 FILTER
< 30,000 ltrs per day



ZABEL A1800
< 1500 ltrs per day



ZABEL A100/300/600
8\"/>



ZABEL A100/300/600
12\"/>



IN-LINE PRESSURE
FILTER
< 300 ltrs/min



UV DISINFECTION
< 15,000 ltrs/min

RISER AND PIPE COVERS



300mm
(12\"/>



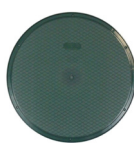
300mm
(12\"/>



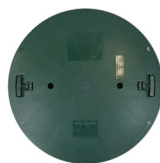
450mm
(18\"/>



500mm (20\"/>



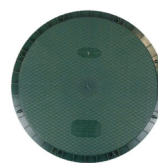
500mm (20\"/>



600mm (24\"/>



600mm (24\"/>



600mm (24\"/>



750mm (30\"/>

RISERS AND RISER KITS



300mm x 150mm
(12\"/>



500mm x 150mm
(20\"/>



500mm x 300mm
(20\"/>



600mm x 150mm
(24\"/>



600mm x 300mm
(24\"/>

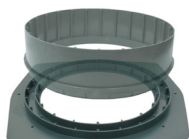


Riser Kits are available in various widths and heights. (With or without safety screens)

ADAPTER RINGS AND RISER TO RISER ADAPTERS



600mm (24\"/>



500mm (20\"/>



450mm (18\"/>



600mm (24\"/>



500mm (20\"/>



600mm (24\"/>

ON-SITE WASTEWATER

GENERAL PRODUCT GUIDE

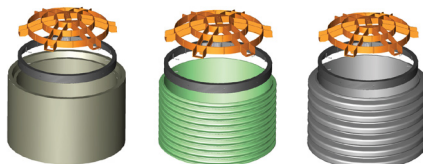
SAFETY PRODUCTS



Corner Guards
 (for strapping)



300mm (12''), 500mm
 (20'') & 600mm (24'')
 Riser Safety Screen



500mm (20'') & 600mm (24'')
 Universal Safety Screen
 (Note: Actual colour is white)



600mm (24'')
 Dual Safety Cover



500mm (20'')
 Riser Pan

DISTRIBUTION BOXES, ODOUR CONTROL & VENTS



4-Hole
 Distribution Box



7 hole D-Box
 (Preassembled)



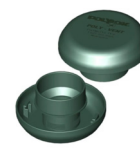
7 hole D-Box
 (Unassembled)



110mm (4'')/150mm (6'')
 Activated Carbon
 Vent Pipe Filter



450mm (18'') /500mm (20'')
 600mm (24'')/750mm (30'')
 Activated Carbon Covers

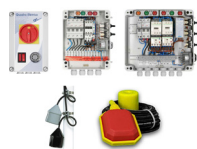


Air Vents

AIR PUMP ENCLOSURES, PANELS, ALARMS, SWITCHES, BASINS, ENZYMES & SEALANT



Air Pump
 Enclosures



Electrical Control
 Panels, Alarms and
 Float Switches



Modular
 Pump
 Chamber



Pre-packaged
 Pump
 Chamber



Pre-packaged
 Filter
 Chamber



Prep & Clean
 Poly-Cleanse



Butyl
 Sealant Strip

WASTEWATER ACCESSORIES



Adjustable
 Equaliser



110mm Rotoflow
 Equaliser



Orifice
 Diffusers



Hydro
 Shields

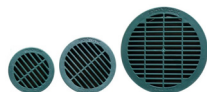


110mm
 Flow Controller



Dipper
 Tipping Tray

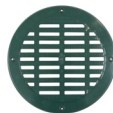
GRATES



100mm (4''), 150mm (6'')
 & 250mm (10'')
 Pipe Grates



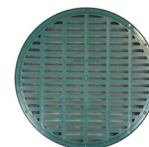
300mm (12'')
 Grate



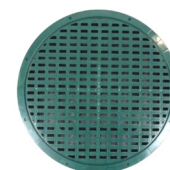
300mm (12'')
 Grate
 (Corr.Pipes)



450mm (18'')
 Grate



500mm (20'')
 Grate



600mm (24'')
 Grate

FOR MORE DETAILED INFORMATION ON ANY PRODUCT PLEASE CONTACT:

Tel: 00353 (0)59 863 1524 Email: info@polylok.eu or visit: www.polylok.eu