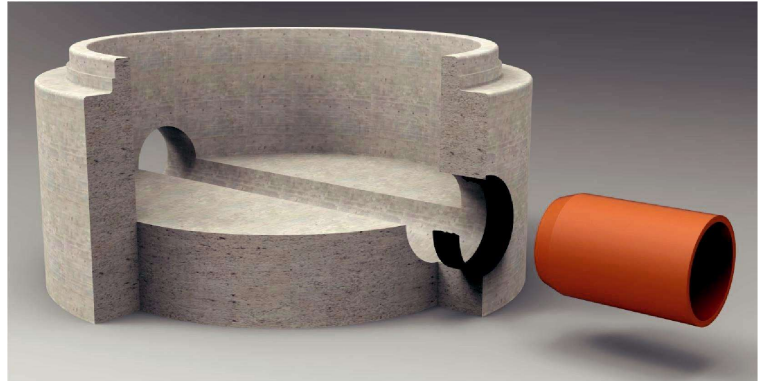


## Wall Seals

Wall seals are used for the connection of pipes into manholes, concrete road gullies, catch pits, pre-formed sectional chambers and other pre-cast structures as well as laterals to pipelines.



### Application

Wall seals are particularly well suited to pre-cast structures or the post fitting of pipes. Wall Seals allow for angular and lateral misalignment of the pipes and provide an effective seal against water penetration along the pipe.

The design incorporates multiple ribs on the inside of the seal, allowing resistance to shear loads and angular deflection while maintaining a watertight connection.

Wall Seals are available in a range of sizes allowing a connection of almost any pipe material and a large range of diameters. Walls seals can also be used to connect PVC pipes into corrugated pipes.



### Material

- | EPDM Rubber
- | 50 +/- 5 shore
- | Manufactured in accordance with BS EN681-5
- | Resistant to Ozone
- | Also available in Nitrile for applications where a higher chemical resistance is required.



## Benefits

- | Available in sizes DN50 upwards.
- | Manufactured using an ISO 9001 Quality System.
- | Can be used in both prefabricated and core drilled holes.
- | Resistant to shear loads.
- | Allows a high level of angular deflection.

## Fitting Instructions

For the best sealing performance it is important that all surfaces are clean and the dimensions of the hole and pipe are accurate.



1. Insert the wall seal into the hole. Lubricant is not required.
2. Chamfer the edge of the connecting pipe and lubricate.
3. Centre the end of the pipe and push it into the seal, ensuring that the pipe end is flush with the inner wall.

## Product Size Range

Product Ref	Pipe OD	Hole Size	A	B
VWS50	50	75	77	50
VWS110	110	138	142	50
VWS125	125	151	154	50
VWS160	160	186	189	50
VWS200	200	226	230	50
VWS250	250	276	281	50
VWS315	315	341	348	50

