

Drainage Catch Basins

Choice of catch basins to suit most requirements.

Add Polylok risers to get more depth.

Polylok's robust range of catch basins will cover most drainage needs, large or small. These catch basins range from 230mm to 600mm and from 2 to 10 pipe connections. Compatible with Polylok risers so you can finish to ground level. All catch basins are supplied with a grate, seals and nuts.

To find out more: email sales@polylok.eu, call us today or visit polylok.eu

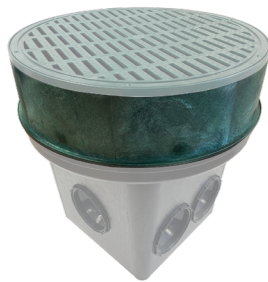
Choose from 5 catch basin options

The round (D) 300mm Catch basin is supplied with stabilizing feet.



(D) 500mm (20") Catch Basin
 Green Grate with 7 Seals
 Cut Guides or Pre-cut

Part no: 3017-207G (or CG for pre-cut)



(D) 500mm (20") x (H) 150mm (6")
 Round Catch Basin Riser
 - Green

Part no: 3009-NG



(D) 600mm (24") Catch Basin
 Green Grate & 10 Seals
 10 Hole Box with Cut Guides

Part no: 3017-G24



(D) 600mm (24") x (H) 150mm (6")
 Round Catch Basin Riser
 - Green

Part no: 3008-NG



(D) 230mm or (D) 300mm
 (9" or 12") Catch Basin
 Black or Green Grates & 2 x Seals

Part no: PDB-9/12KIT(Black) or (Green)



(D) 300mm x (H) 150mm
 (12" x 6") Riser

Part no: PDB-12R (Black) or (Green)



(D) 300mm (12") Catch Basin
 Green Grate
 With Cut Guides & 4 x Seals

Part no: 3017-G



(D) 300mm (12") x (H) 150mm (6")
 Round Catch Basin Riser
 - Green

Part no: 3017-R

Typical Applications:

1. Residential
2. Commercial

Main Benefits:

1. Strong HDPE construction
 - never corrodes!
2. Catch basins are supplied with seals
 (seals for 110mm pipes)
3. Adjust depths with risers & cut guides
4. Easy to use, fully lockable grates
5. Strong pedestrian rated grates
6. Add more pipes using cut guides

